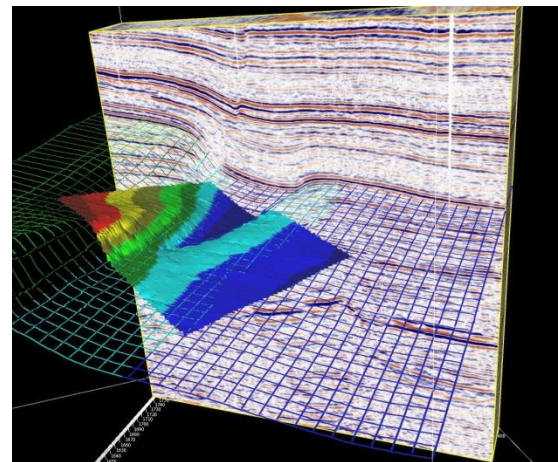




Seismic Interpretation and Prospect Definition

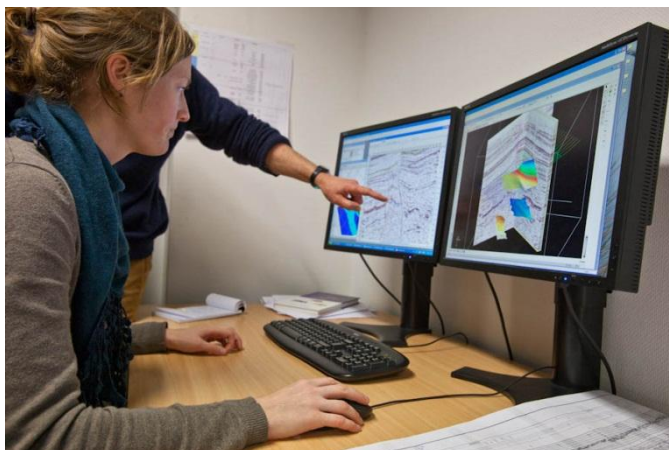
The interpretation of seismic data is one of the key activities for the definition of oil and gas prospects. The seismic interpretation is performed with IHS Kingdom™ or Petrel™ and includes:

- Data loading and QC
- Well-tie to seismic
- 2D/3D Seismic interpretation
- Depth conversion
- Seismic modelling



Activities concurrent with the identification of a play and/or subsequent definition of a prospect will encompass:

- Seismostratigraphic interpretation, attribute analysis and acoustic impedance
- Play risk assessment of petroleum systems and seal integrity
- Prospect generation and well proposal reports
- Possibility of success, expected hydrocarbon resources and risked resources



Amsterdam Petroleum Geoscience can address specific components or work on an integrated flow that will lead to full assessment of multiple prospects.