



Openhole Log Evaluation and Quantitative Petrophysical Analysis

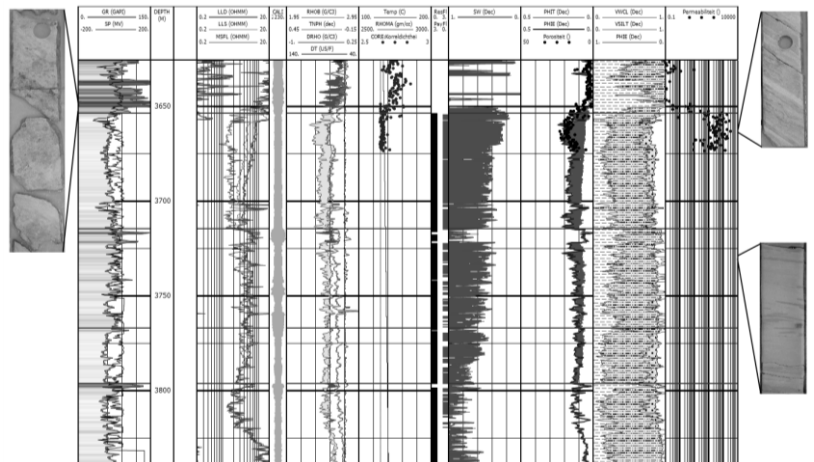
Amsterdam Petroleum Geoscience provides evaluation of openhole logs from LWD and quantitative petrophysical analysis, including:

- Digitization of old format paper logs
- Russian style logs
- Data quality checks
- Log editing
- Splicing and normalization

Interpretation is conducted using deterministic and/or probabilistic methods. Where available, we incorporate and calibrate log data with core data (RCA & SCAL). We employ Interactive Petrophysics™, an integrated package for petrophysical analysis.

Deliverables may include:

- Total net hydrocarbon pay
- Determination of Oil Water Contact (OWC)
- Free Water Level (FWL)
- Reservoir properties
- Lithology/mineralogy analysis
- Generation of synthetic logs



For multiple well studies we focus on geologically/sedimentary guided log correlation in order to obtain a quick-look, early model of the reservoir and to define a vertical permeability profile.